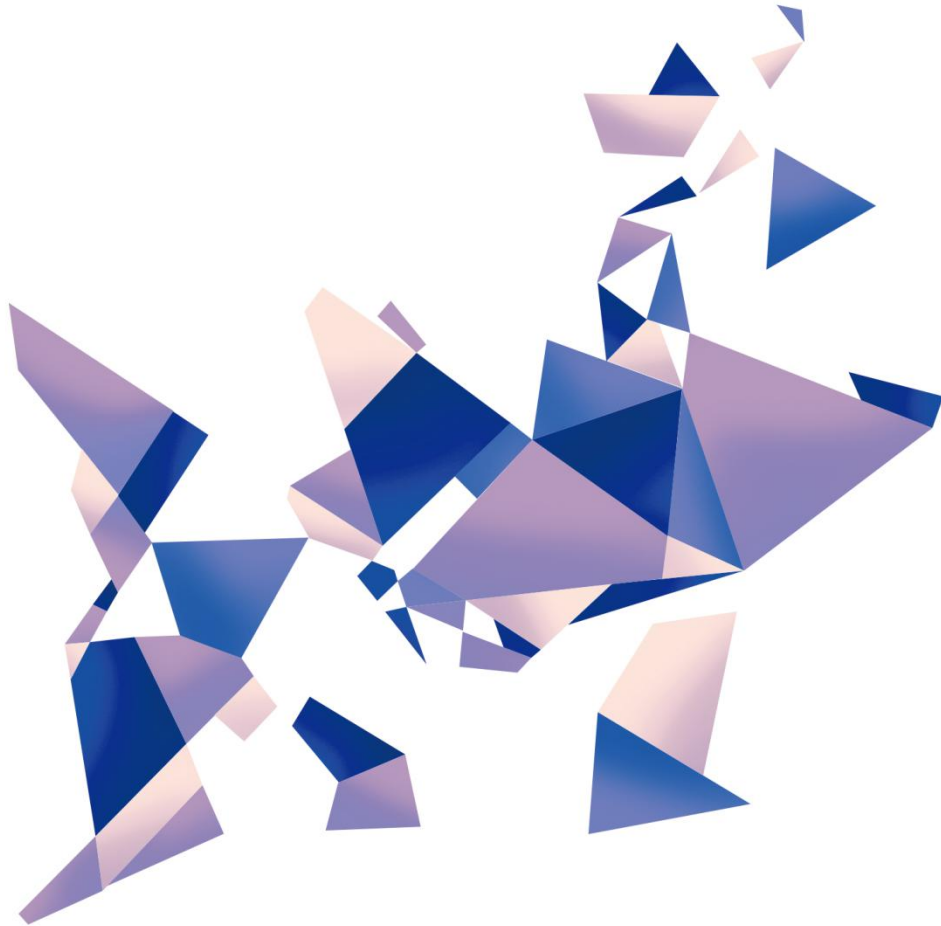


# KP2H

## Pandora series

Version: v1.0

Release Date: October 2021



## Specifications



TEL 400 159 0808  
Web: [www.kystar.com.cn](http://www.kystar.com.cn)

**Beijing KYSTAR Technology Co., Ltd.**

Professional Ultra HD Video Display  
Control system integrated solution and service provider

## Version record

version number	Change details	release time
V1.0	first release	2021.10.25

## Pandora KP2H Product Specification

### Overview

KYSTAR Pandora KP2H is a multimedia player that integrates sending card and playback terminal. Compared with the traditional synchronous playback solution, it can reduce the need for computer playback terminal and is easy to control at any time. It is small in size, powerful in performance, powerful in functions, and more. Large load capacity;

Advertisements on mirror screens, light pole screens, full-color door screens, etc.

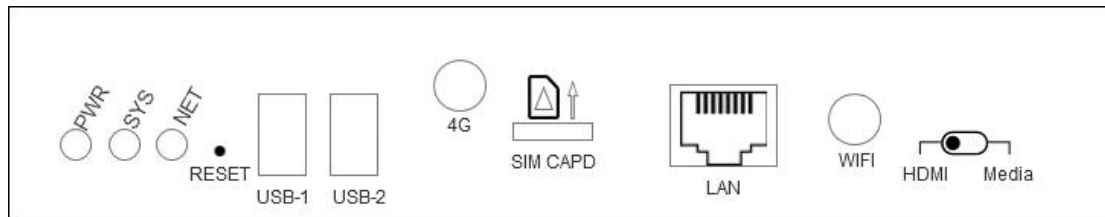


### Features

- Gigabit Ethernet port\*4, 2 main and 2 backups, single Ethernet port 65W points, Whole machine load 1.3 million pixels, the maximum width is 3840 pixels, the maximum is 2000 pixels;
- WIFI, Ethernet port, U disk multiple communication methods
- Built-in 8GB (5G available for users), support U disk expansion
- 3.5mm audio output, audio and video synchronous output
- Support HDMI input and output, full-screen adaptive playback
- Support multiple windows and multiple materials to play on the screen at the same time
- Onboard brightness sensor interface, automatically adjust the screen brightness according to the ambient brightness
- Kystar PE program editing, drag and drop operation, do what you want
- Concise APP for full control of screen adjustment, editing and management,

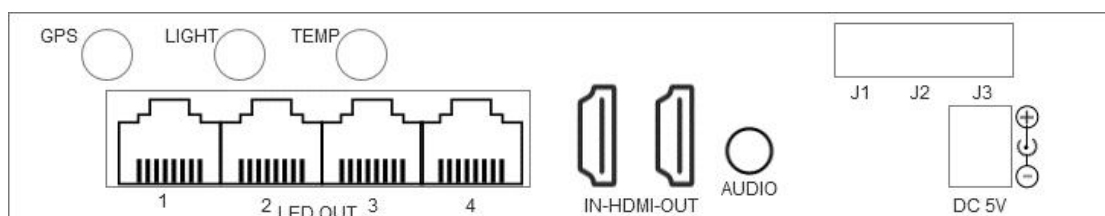
## Panel description

### Front panel



Name	Function Description
SYS	Running status indicator The system and app start normally, sys is always on; When the player app is abnormal, sys flashes, once per second System upgrade process, sys flashes quickly, 4 times per second
NET	Connect status indicator The NET light is always on when Pandora is connected, otherwise it will not be on; When connect to cloud platform, NET flashes, once per second; Upload program, NET flashes quickly, 4 times per second
PWR	Power indicator, long light indicates normal power supply
RESET	Restore factory settings, always press for 5 seconds to factory
USB	USB2.0 *2, Update program via U disk
4G	4G Wifi Antenna interface
SIM	4G card slot, supports 4G cards of the three major operators
LAN	100M input network port, access to LAN, can be directly connected to PC
WIFI	Wifi Antenna interface
HDMI--Media	Dual mode switch button HDMI: Sync mode Media: Async mode

### Back panel



Name	Function Description
GPS	GPS antenna interface, used for scenarios requiring positioning and precise timing
LIGHT	Brightness sensor interface
TEMP	Temperature and humidity sensor interface
LAN1-4	Four gigabit output network ports, connected to Kystar all receiving cards
AUDIO	3.5mm Audio output port

HDMI	IN: HDMI 1.3 input interface, external signal OUT: HDMI 1.3 output interface, loop out signal
J1-J2-J3	Relay interface, can control external power switch
5V DC	Provide 5V/4A power supply

## Specifications

External interface type	
Gigabit output network port*4	2 main and 2 backup, output signal to receiving card
Audio output port*1	1/8" (3.5mm)TRS
USB2.0*2	Storage expansion (U disk or SD card, maximum 128G)
100M input network port*1	Access to local area network, cluster control
WIFI	WiFi STA+AP Dual mode, can be connected to the router, can be used as a hotspot for mobile phone, computer connection
HDMI	HDMI input and output
LIGHT	External brightness sensor to control the screen brightness according to the ambient brightness
TEMP	External temperature and humidity sensor to obtain ambient temperature and humidity
Relay	Used to control external power switch
4G (Optional)	Access to WAN
GPS (Optional)	Precise positioning, precise timing, multi-screen synchronization
DC Power input	DC 5V/4A Power input

Performance parameter	
Hardware performance	1.6GH, quad-core CPU, 3D GPU 1GB@600MHz DDR3 high-speed memory Support 1080p@60fps hard decoding playback Support 1080p@30fps hardware encoding
Storage	Built-in 8GB storage (5G available to users)
Load	Single Lan port load 650,000 pixels, whole machine load 1.3 million pixels, the widest is 3840, the highest is 2000
Wifi connect distance	20m (Unobstructed)

Support multimedia format	
Video format	AVI, WMV, MPG, RM/RMVB, VOB, MP4, FLV and other common video formats; Supports same time playback of multiple videos
Audio format	MPEG-1 Layer III, AAC etc.
Image Format	Support bmp、jpg、png etc.
Text form	Single line text, static text, multi-line scrolling text, office, etc.
Clock	Real-time clock, multi-regional clock display and management.
OSD	Support 32bit true color OSD, can be displayed in any position, support video/graphics

	mixing, can superimpose graphics on the video.
--	--

Whole machine specification	
Dimensions	247.2x138.5x51.1mm (L×W×H)
Support receiving card	KYSTAR all receiving card
Number of loaded receiving cards (single network port)	200 (single lan port)
Input adapter power	DC 5V/4A Power supply
Rated power	18W
Operating temperature	-20°C -70°C
Working humidity(%)	5%-95%

Attachment: equipment size chart

